

CYANAGEN
Reagents for Molecular Biology

NEW

THE RIGHT LIGHT

WESTAR-ECO

ECL Substrates for Western blotting

07

www.cyanagen.com

About us

Cyanagen is a biotech company located in Bologna, dedicated to research, development, and production of reagents for life science since 2003 and one of the leading companies in reagents for Western blotting and ELISA. Since 2020 the company entered the IVD market with nucleic acids extraction kits based on proprietary magnetic beads.

The main product lines are focused on chemiluminescent and fluorescent substrates and nucleic acids extraction kits for biological analysis, genomics, proteomics and molecular diagnostics. Most of Cyanagen products are based on Cyanagen's internationally patented technologies and achieve outstanding performance in terms of sensitivity and stability.

Customer satisfaction and product top quality are of paramount importance to us.

Cyanagen s.r.l. has a certified Quality System

ISO 9001:2015 - ISO 13485:2016

Product manual

WESTAR-ECO

ECL substrates for Western Blotting

WESTAR-ECO ARE INTENDED FOR RESEARCH USE ONLY AND SHALL NOT BE USED IN ANY CLINICAL PROCEDURES OR FOR DIAGNOSTIC PURPOSES.

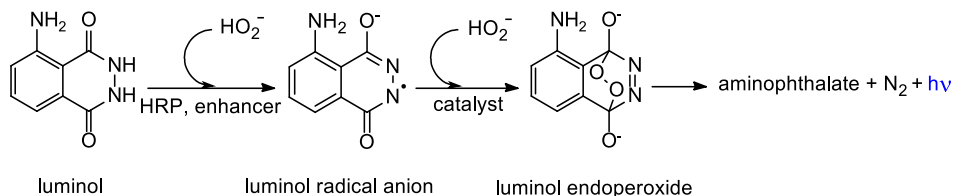
www.cyanagen.com

Table of contents

1. Introduction	5
Storage/expiry	
2. Components and other materials required	6
Kit components	
Other required solutions	
3. Perform SDS-PAGE	7
4. Prepare transfer membrane	7
5. Transfer to membrane	8
Constant voltage or current during transfer?	
6. Membrane staining (optional)	9
7. Blocking the membrane	9
8. Antibody incubation	10
Suggested Ab dilutions	
9. Chemiluminescent detection	11
Autoradiography film vs. imaging devices	
10. Troubleshooting	12
High membrane background	
Irregular black spots	
No bands or weak bands	
Non-specific bands	
White bands or "ghost bands"	
Uneven or jagged bands	
11. Ordering information	15

1. Introduction

The peroxidase-catalyzed oxidation of luminol and its derivatives produces a weak flash of light at 425 nm. The incorporation of an electron transfer mediator into the buffer forces the flash signal into a glow and greatly improves the analytical characteristics of the reaction in terms of increased signal intensity and duration.^{1,2} Recent works³⁻⁶ have shown that, by addition of a suitable acylation catalyst, a further large increase in light output is observed.



WESTAR-ECO detection reagents are non-isotopic, chemiluminescence substrates, designed for the chemiluminescent detection of immobilized proteins and immobilized nucleic acids conjugated with horseradish peroxidase (HRP). WESTAR-ECO are intended for research use only, and shall not be used in any clinical procedures, or for diagnostic purposes.

References:

1. Kricka, L.J. (2000) *Methods Enzymol.* 305, 370-390.
2. Heindl, D. and Josel, H.P. (1997) *Non-radioactive Analysis of Biomolecules*, 258-261. Springer, Berlin.
3. Marzocchi, E., Grilli, S., Della Ciana, L., Prodi, L., Roda, A. and Mirasoli, M., (2008) *Anal. Biochem.*, 377, 189-194.
4. Vdovenko, M. M., Della Ciana, L., Sakharov, I. Yu., (2009) *Anal. Biochemistry*, 392, 54-58.
5. Vdovenko, M. M., Della Ciana, L., Sakharov, I. Yu., (2010) *Biotechnology Journal*, 5(8),886-90.
6. Vdovenko, M.M., Zubkov, A.V., Kuznetsova, G.I., Della Ciana, L., Kuzmina, N.S., Sakharov, I. Yu., (2010) *J Immunol Methods*, 362 (1-2), 127-130.

Storage/expiry

One year at +4°C.

WESTAR-ECO product line

Compact and light, with sustainable use of water and no possible contaminations, WESTAR-ECO is the new, innovative single-use tab format for ECL for Western blotting designed to match the aim for ecological, responsible technology.

WESTAR-ECO	SUPER
Signal intensity	High
Signal duration	Short
Protein abundance	Low

2. Components and other materials required

WESTAR-ECO

- **Tablet A:** Luminol derivative/enhancer tablet
- **Tablet B:** Peroxide tablet

Other required solutions

Solution	Preparation	
Running Buffer	For 1L of 10x Running Buffer (stock): <ul style="list-style-type: none">• 30.3 g TRIS (250mM)• 144.0 g Glycine (1.9M)• 10.0 g SDS (1% w/v)• Dilute to 1L with distilled water	For 1L of Running Buffer: <ul style="list-style-type: none">• 100mL of 10x Transfer Buffer• Dilute to 1L with distilled water
Transfer Buffer	For 1L of 10x Transfer Buffer (stock): <ul style="list-style-type: none">• 30.3 g TRIS (250mM)• 144.0 g Glycine (1.9M)• Dilute to 1L with distilled water	For 1L of Transfer Buffer: <ul style="list-style-type: none">• 100mL of 10x Transfer Buffer• 200mL of methanol• Dilute to 1L with distilled water
TBS-T Buffer	For 1L of 10x TBS Buffer (stock): <ul style="list-style-type: none">• 24.23 g TRIS-HCl (20mM)• 80.06 g NaCl (136mM)• Dilute to 800mL with distilled water• Add NaOH 1M until pH is about 7.6• Dilute to 1L with distilled water	For 1L of TBS-T Buffer: <ul style="list-style-type: none">• 100 ml of 10x TBS Buffer• While stirring add 1 mL Tween-20• Dilute to 1L with distilled water
Blocking Buffer	With 5% non-fat dried milk: <ul style="list-style-type: none">• 5 g Non-fat dried milk• Dissolve in 100 ml 1x TBS-T Buffer	With 5% BSA: <ul style="list-style-type: none">• 5 g BSA (Cohn fraction V)• Dissolve in 100 ml 1x TBS-T Buffer
Ponceau staining solution	For 100mL of 10x Ponceau staining solution (stock): <ul style="list-style-type: none">• Dissolve 0.5 g Ponceau S in 1.0 ml glacial acetic acid• Dilute to 100 ml with distilled water• Wrap bottle with foil to protect solution from light	For 1L of Ponceau staining solution: <ul style="list-style-type: none">• 100 ml of 10x Ponceau S staining solution• Dilute to 100 ml with distilled water

3. Perform SDS-PAGE

- I. Prepare fresh **Running Buffer**.
- II. Load the gels being sure to keep a tight seal between the gel-cast and the gasket.
- III. Pour the running buffer into the middle of the gels and check for leaks.
- IV. Pour the rest of the running buffer into the bottom of the running tank.
- V. Remove combs and use a pipette to clean away any unpolymerized acrylamide.
- VI. Load a proper **prestained MW standard** in one lane.
- VII. Load samples into the rest of the wells and fill any empty well with sample buffer.
- VIII. Run at 90÷130 V constant voltage until the dye front reaches the bottom of the gel. If the current is too high band smiling and smearing (diffuse band) are commonly seen effects.



4. Prepare transfer membrane

If using nitrocellulose membrane place into distilled water slowly, with one edge at a 45° angle. If inserted too quickly into the water, air gets trapped and protein will not transfer onto these areas. Once wet, equilibrate the membrane in **Transfer Buffer** for 15 min.



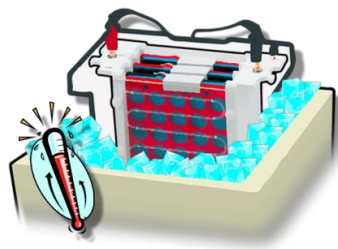
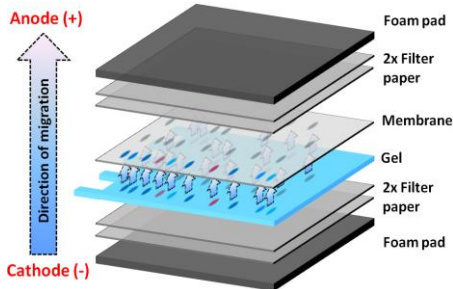
If using PVDF membrane activate it with methanol for 30 seconds. Rinse with distilled water and equilibrate in **Transfer Buffer** for 15 min.

- **For proteins >15 kDa use membrane pore size 0.45 mm**
- **For proteins <15 kDa use membrane pore size 0.2 mm**

NOTE: Low molecular weight proteins (< 15kDa) are sometimes transferred through nitrocellulose membranes, therefore may be not visible on the blot. PVDF membrane has higher protein binding capacity than nitrocellulose membrane and is recommended for best detection sensitivity.

5. Transfer to membrane

- I. Wet four filter papers in **Transfer Buffer**.
- II. Assemble the transfer sandwich in a tray large enough to hold the plastic transfer cassette. Fill with **Transfer Buffer** so that the cassette is covered.
- III. Place the first foam pad onto the black side of the transfer cassette then place two pre-wetted filter papers on the top of it.
- IV. Place the gel and moisten its surface with **Transfer Buffer**.
- V. Place pre-wetted membrane directly on the top side of the gel, then gently remove all air bubbles. The proteins will transfer as soon as the gel is placed on the membrane, its repositioning can generate a smeared image.
- VI. Place another two pre-wetted filter paper over the membrane and remove all air bubbles.
- VII. Complete the assembly by placing the last foam pad and locking the top half of the transfer cassette.
- VIII. Fill the transfer tank with **Transfer Buffer** and place the transfer cassette.
- IX. Put a frozen cooling unit into the transfer tank and surround it with ice in a polystyrene box.
- X. Run the transfer with the following settings:
 - Wet transfer:** 80÷100 V for 30÷60min.
 - Semi-dry transfer:** 15÷25 V for 20÷30min.
- XI. When transfer is complete, remove the membrane and mark its orientation by cutting a corner.
- XII. Wash the membrane twice with distilled water.



Constant voltage or current during transfer?

The buffer composition changes as salts are eluted from the gels, resulting in an increase in current and a drop in resistance. A transfer using constant current leads to decrease in voltage as well as resistance ($I=V/R$). Therefore, the use of constant voltage provides the best driving force during transfer. However, when current reaches over 500mA in constant voltage setting cooling the gel is crucial for preventing joule heating in the tank.

6. Membrane staining (optional)

- I. Stain the membrane with protein side up using **Ponceau staining solution** for 5 minutes at RT to check transfer efficiency.
- II. Rinse the membrane in distilled water until protein bands are distinct.
- III. Scan the membrane if desired.
- IV. Completely destain the membrane by immersing it for 10 min in a large volume of distilled water.
- V. Re-activate PVDF membrane with methanol then wash in **TBS-T Buffer**.



NOTE:

- The background staining tends to be high with some dyes while Ponceau staining solution gives a very clean pattern.
- Re-activate PVDF membrane after staining.
- The LOD for Ponceau staining solution is 250 ng of protein.

7. Blocking the membrane

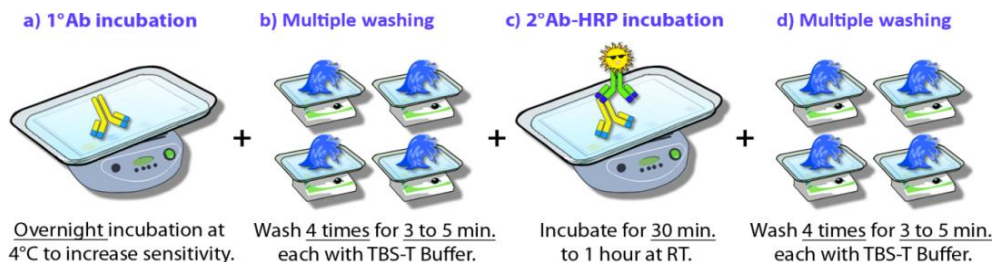
- I. Place the membrane with protein side up into a fresh tray with your choice of **Blocking Buffer**.
- II. Incubate the membrane in **Blocking Buffer** for 30÷60 minutes with gentle agitation on a rocker/shaker. Δ maximum blocking time of 2 hours at RT should not be exceeded. Blocking for too long can result in antigen masking and loss of protein.
- III. Rinse the membrane twice with **TBS-T Buffer**.



NOTE: Add 3% non-fat dry milk in TBS-T Buffer when dilute Ab to reduce non specific bindings. Milk contains many proteins, which bind to the membrane. So, after transfer, proteins contained in the milk bind to the membrane and fill a lot of potential non specific sites. After this, when you incubate with your antibody, it binds to the antigen and has less possibilities of non specific binding. If you are working with anti-phosphoproteins or with biotinylated antibodies the adding of milk is not appropriate. Use 5% BSA instead.

8. Antibody incubation

- I. Dilute the primary antibody in fresh **TBS-T Buffer** to the suggested primary antibody dilution (see table below).
- II. Incubate the membrane with protein side up in the primary antibody solution for 1 to 2 hours at RT. To increase sensitivity, try an overnight incubation at 4°C with agitation on a rocker. Make sure the membrane is completely covered with **TBS-T Buffer** with primary Ab.
- III. Wash the membrane with protein side up 4 times for 3 to 5 minutes each with **TBS-T Buffer** with gentle agitation on a shaker. **After each washing place the membrane on a new clean tray with fresh TBS-T buffer.**
- IV. Dilute the secondary Ab in fresh **TBS-T Buffer** to the suggested secondary antibody dilution (see table below).
- V. Incubate the membrane with protein side up for 30 minutes to 1 hour at RT. Increasing the incubation time of the secondary antibody usually leads to higher background.
- VI. Wash the membrane with protein side up 4 times for 3 to 5 minutes each with **TBS-T Buffer** with gentle agitation on a shaker. **After each washing place the membrane on a new clean tray with fresh TBS-T buffer.**



Product	Suggested antibody dilutions	
WESTAR-ECO SUPER Cod. XLS310	Primary Ab	1:5.000 - 1:100.000
	Secondary Ab	1:100.000 - 1:500.000



IMPORTANT: Optimal Ab dilutions may vary between different applications and depend on quality and affinity for the target protein. It is crucial to optimize both primary and secondary Ab dilutions for best results with high signal and low background. Optimal Ab dilutions can be determined by Dot-Blot assay.

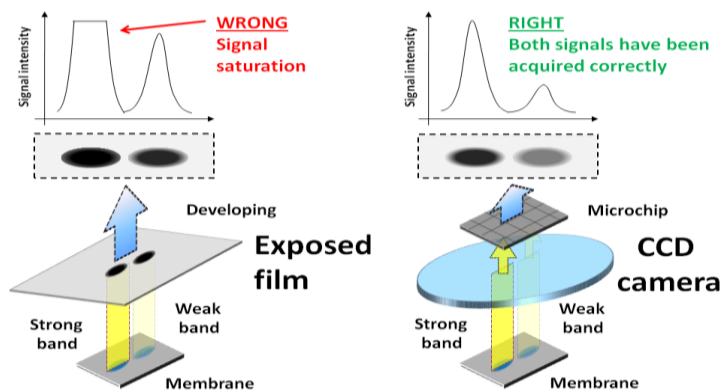
9. Chemiluminescent detection

WESTAR-ECO preparation: Take 1 Tablet A and 1 Tablet B and dissolve in 5 mL of distilled water in a 15 mL plastic tube to prepare the Working Solution. Put the plastic tube on a shaker and wait until both the tablets are dissolved (at least 10 minutes).

- I. Remove the membrane from its tray of **TBS-T Buffer**, rinse the membrane twice with TBS-T Buffer, and keep it in **TBS** until the incubation with **WESTAR-ECO**.
- II. Use 0.1 ml of **WESTAR-ECO** per cm² of membrane. Allow the excess buffer to run off from a corner. Do not let the membrane dry out. Just pipette the volume required directly onto the membrane with protein side up and incubate for **1,5 min** ensuring that the entire surface is covered.
- III. Acquire the signal with autoradiography film or imaging devices. For an unknown signal, try to expose 15 s, 30 s, 1 min and 5 min to start with.

Autoradiography film vs. imaging devices

Nowadays, Western Blotting is used either for absolute quantification (in combination with a calibration curve of the recombinant protein of known concentration) or for quantification of samples relative to a control sample. Through the development of new technologies most imagers offer a wide dynamic range (3÷5 orders of magnitude) generating a high-quality image compared with the limited linear dynamic range of film (1.5 orders of magnitude). This means that it is possible to quantify both strong and weak signals on the same blot with reliable results. Instead, on film strong signals get saturated resulting in a wrong quantitation.



10. Troubleshooting



High membrane background

High concentration of Ab. Further dilute primary and secondary Ab. Follow suggested Ab dilutions.

Inefficient blocking. Increase Tween-20 in TBS-T Buffer (0.1%÷0.5% v/v). Use 5% non-fat dried milk as blocking buffer if possible.

Insufficient washing. Increase both the volume, length and number of wash steps. Always use sufficient volumes to submerge the membrane.

Primary antibody is not specific for the protein of interest. Use monospecific or antigen affinity purified antibodies. Always incubate your primary antibody at 4°C overnight and not at room temperature. Reduce NaCl in TBS-T Buffer (100mM÷350mM). Use monospecific or antigen affinity purified Ab.

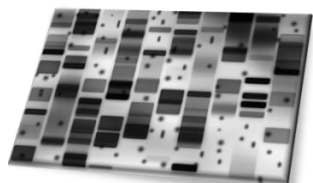
Non-specific binding of secondary antibody. Confirm the secondary is specific by omitting the primary and running a secondary only blot. If bands develop, choose an alternative secondary antibody.

Incompatible blocking agent. Non-fat dry milk contains endogenous biotin and is incompatible with avidin/streptavidin systems. Substitute with 5% BSA.

Poor quality of antibodies. Quality and age of primary and secondary antibody may lead to background problems.

Poor handling of membrane. Be sure to handle the membrane only with clean plastic tweezers and non-powdered gloves.

Contaminated buffer solutions. Check buffers for particulate or bacterial contaminate. Replace old buffers.



Irregular black spots

Air bubble trapped in membrane. Remove air bubbles by gently rolling a clean pipette or a test-tube during sandwich assembling.

Unevenly hydrated membrane. Make sure that the membrane is fully immersed during washes and antibody incubations.

Contaminated equipment. Protein or pieces of gel remaining on the unit may stick to the membrane. Antibody can get trapped in the gel, and then are washed out poorly, resulting in intense localized signal.

Aggregation of blocking agent. When blocking agent is powder stir it over night at 4°C to make sure it is completely dissolved.

Interaction of the membrane with sample tray. Always use clean plastic trays to avoid any type of cross-reaction

Formation of aggregates in HRP-conjugate. Filter secondary antibody solution through a 0.2 µm filter. Use fresh antibody.



No bands or weak bands

Excessive signal generated. The enzyme in the system depleted the substrate and caused the signal to fade quickly. Further dilute secondary Ab.

Inefficient transfer. Ensure that there is good contact between membrane and gel during sandwich

assembling. High MW protein may require more time for transfer. Reduce voltage or time of transfer for low molecular weight proteins (< 10 kDa).

Antibodies may have lost activity. Perform a Dot Blot. Follow manufacturer's recommended storage and avoid freeze/thaw cycles.

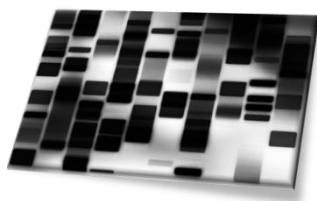
Incorrect secondary antibody used. Confirm host species/Ig type of primary Ab.

Low protein-antibody binding. Reduce the number of washes to minimum. Reduce NaCl in TBS-T Buffer (100mM ÷ 350mM).

Non-fat dry milk may mask some antigens. Decrease blocking time. Decrease milk percentage in Blocking Buffer or substitute with 5% BSA Blocking Buffer.

Sodium azide contamination. Make sure buffers do not contain sodium azide as this will quench HRP signal.

Contaminated stock solutions. Do not contaminate the chemiluminescent substrate stock solutions using the same pipette tip. Use new reagents.



Non-specific bands

Aggregation of analyte. Increase amount of reducing agent to ensure complete reducing of disulfide bonds.

SDS interference. The presence of SDS may result in the development of unspecific bands caused by

antibodies binding to the charged SDS molecules associated with the proteins. Wash thoroughly the membrane after transfer with water.

High protein concentration. A commonly seem effect is the diffusion of protein bands. Reduce the amount of protein initially loaded.

Primary antibody is not specific for the protein of interest. Use monospecific or antigen affinity purified antibodies. Always incubate your primary antibody at 4°C

overnight and not at room temperature. Reduce NaCl in TBS-T Buffer (100mM÷350mM). Use monospecific or antigen affinity purified Ab.

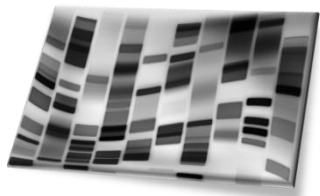
Non-specific binding of secondary antibody. Confirm the secondary is specific by omitting the primary and running a secondary only blot. If bands develop, choose an alternative secondary antibody.



White bands or “ghost bands”

Excessive signal generated. Excessive antibodies or loaded protein can cause high levels of localized signal. This results in rapid consumption of substrate at this point. Since there is no light production after the completion of this reaction, white bands are the

result. Try first to further dilute secondary antibody.



Uneven or jagged bands

Uneven gel run. Load all available wells. Empty wells can be loaded with sample buffer.

Voltage or current were too high during electrophoresis. Reduce voltage or current during electrophoresis.

Effects of high salt in samples. Reduce NaCl concentration in TBS-T Buffer (100mM÷350mM).

11. Ordering Information

Product	Code	Size
WESTAR-ECO SUPER	XLS310,020	20 rxn (equivalent to 100 mL)
	XLS310,004	4 rxn - Trial Size (equivalent to 20 mL)

For further information, visit www.cyanagen.com

For orders: call **+39 051.534063**
mail to sales@cyanagen.com

Warranty Disclaimer at
www.cyanagen.com/warranty-disclaimer/