

STAR BEADS DNA Extraction kit

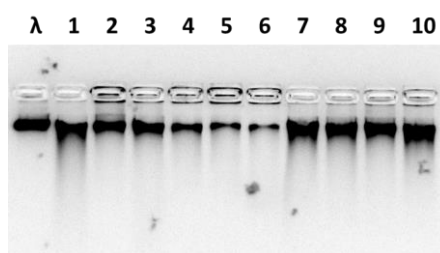
Rapid isolation of DNA from various body fluids and biological samples

Overview

STAR BEADS DNA Extraction Kit provides a fast and efficient purification method to isolate high-quality genomic, bacterial or viral DNA from various body fluids and biological samples.

The extracted nucleic acids are highly pure and ready for downstream reactions, including real-time PCR, qRT-PCR, Sanger Sequencing, NGS, and other enzymatic reactions.

The kit is fully automatable in a variety of extraction instruments. For automated scripts and protocols, visit the document section on our website www.cyanagen.com or email to technical.support@cyanagen.com



Genomic DNA extraction using STAR BEADS DNA Extraction Kit from different tissues. gDNA extracted from murine (1) liver, (2) brain, (3) tail, (4) heart, (5) muscle, (6) skin, (7) kidney, (8) ovary, (9) colon, (10) lung, and separated by gel electrophoresis on a 1% agarose gel. λ is DNA from Lambda phage used as a MW marker. Up to 5 mg of tissue incubated overnight at 56°C in STAR BEADS Tissue Lysis Buffer (Cyanagen, cod. SBLS309) before extraction.

Features

- Purification of high quality DNA
 - Versatile: isolation of DNA from a variety of sample types and for several applications.
 - Eco-friendly: Magnetic bead-based technology allows up to 50% reduction in plastic use
 - Easy to use: available in both bottled and prefilled plate format, ready to use by manual procedure or on automatic extractors
 - Reduce hands-on time and human errors: in automated extraction just load the sample and proteinase K on the prefilled plate
 - Rapid: protocol for manual extraction, automatic extraction time about 75 minutes for 96 and 32 samples
 - Easy storage: room temperature
 - Automatable: compatible with
 - ✓ Allsheng Auto-Pure96/Auto-Pure32A/Mini
 - ✓ Accuris IsoPure™ Mini/96
 - ✓ Procomcure Phoenix-Pure96/32
 - ✓ MOLGEN PurePrep 96/32
 - ✓ BIOER GenePure Pro NPA-32P
 - ✓ MGI SP-NE32
 - ✓ BIGFISH BFEX-32
- ...and many other systems

Recommended sample input and expected yields from different sample types

Sample type	Input amount	Typical yield (μg)	Typical A_{260}/A_{280}
Whole blood	200 μL	2 - 8	> 1,8
Saliva*	200 μL	2 - 8	> 1,8
Cultured mammalian cells	From 10^5 to 10^6 cells	2 - 30	> 1,8
Formalin-Fixed Paraffin-Embedded	3 - 8 sections ($\geq 4 \mu\text{m}$)	1.5 - 3.0	> 1,8
Tissue**	2 - 10 mg	2 - 40 **	> 1,8

Average yield, A_{260}/A_{280} and A_{260}/A_{230} were measured using Implen™ NanoPhotometer™ NP80 or Nanodrop2000.

* Saliva stored in Oragene™ collection kit (DNA Genotek)

**the yield of DNA will depend on both the amount and the type of tissue processed

Order information

PRODUCT	ORDER NO.	FORMAT	UNIT SIZE
STAR BEADS DNA Extraction kit	SBK307,1X96	bottles	96 preps
	SBK307,1X96PFI	pre-filled plates for 96 extractors	96 preps
	SBK307,2X32PFI	pre-filled plates for 16/32 extractors	64 preps

REQUEST a sample to: sales@cyanagen.com