



WESTAR-ONE

single solution chemiluminescent substrates for Western Blotting

Selection guide

WESTAR-ONE line includes three products with different levels of sensitivity, from picograms to low femtograms, covering all detection needs.

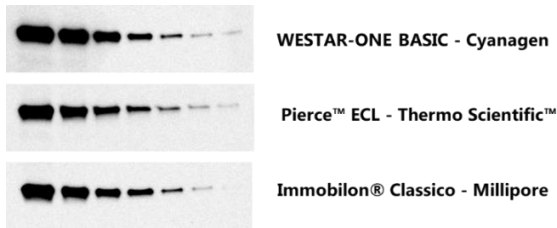
WESTAR-ONE pre-mixed solutions, based on proprietary technology, provide convenience, increased consistency in your results, avoiding pipetting errors and possible contaminations.

WESTAR-ONE substrates storage is at Room Temperature (RT).

Product	Competitors	When to use
WESTAR-ONE BASIC Cod. XLSU177	WESTERN LIGHTNING™ ONE PICO - REVVITY AMERSHAM ECL START™ - CYTIVA IMMOBILON® CLASSICO - MILLIPORE™ AMERSHAM™ ECL™ - CYTIVA PIERCE™ ECL-THERMO SCIENTIFIC™	Mid-picogram detection
WESTAR-ONE PLUS Cod. XLSU178	WESTERN LIGHTNING™ ONE FEMTO - REVVITY AMERSHAM™ ECL PRIME™ - CYTIVA IMMOBILON® CRESCENDO - MILLIPORE™ CLARITY™ - BIO-RAD SUPERSIGNAL™ WEST DURA - THERMO SCIENTIFIC™ SUPERSIGNAL™ WEST PICO PLUS - THERMO SCIENTIFIC™ WESTERNBRIGHT™ QUANTUM™ - ADVANSTA	Mid-femtogram detection
WESTAR-ONE EXTREME Cod. XLSU180	WESTERN LIGHTNING™ ONE FEMTO ULTRA - REVVITY CLARITY MAX™ - BIO-RAD AMERSHAM™ ECL SELECT™ - CYTIVA WESTERN LIGHTNING™ ULTRA - REVVITY IMMOBILON® FORTE - MILLIPORE™ SUPERSIGNAL™ WEST FEMTO - THERMO SCIENTIFIC™ WESTERNBRIGHT™ SIRIUS™ - ADVANSTA	Low-femtogram detection

WESTAR-ONE BASIC

Our entry level pre-mixed substrate for mid-picogram detection level.



Western blotting detection of HDAC-1 on Hela cell lysate with WESTAR-ONE BASIC and its competitors.

Sample: Two-fold dilution series of Hela whole cell lysate (abcam®) from 5 µg to 0.078 µg of total protein

Primary antibody: Rabbit-anti Human HDAC-1 (abcam®) 1:2000

Secondary antibody: Goat anti-rabbit IgG HRP (2mg/mL) (abcam®) 1:20000

Imaging: ImageQuant™ LAS 4000 (GE Healthcare). Exposure time: 120 seconds

WESTAR-ONE PLUS

Versatile pre-mixed substrate for mid-femtogram detection level.

Less optimization required.

High sensitivity combined with a broad linear dynamic range for an accurate quantification of both low and high abundance proteins in the same experiment.



Western blotting detection of HDAC-1 on Hela cell lysate with WESTAR-ONE PLUS and its competitors.

Sample: Two-fold dilution series of Hela whole cell lysate (abcam®) from 5 µg to 0.078 µg of total protein

Primary antibody: Rabbit-anti Human HDAC-1 (abcam®) 1:5000

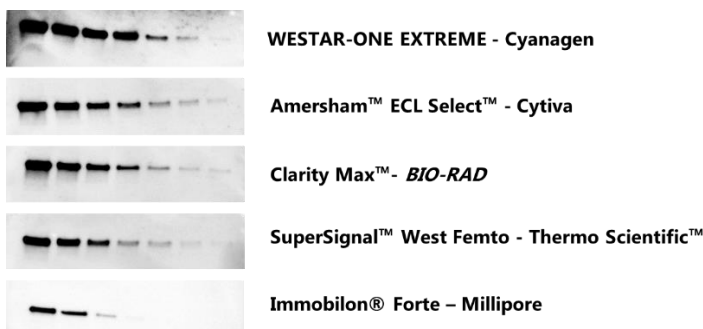
Secondary antibody: Goat anti-rabbit IgG HRP (2mg/mL) (abcam®) 1:75000

Imaging: ImageQuant™ LAS 4000 (GE Healthcare). Exposure time: 120 seconds

WESTAR-ONE EXTREME

The most sensitive chemiluminescent single ECL substrate available to date for low-femtogram detection level.

Excellent signal intensity to detect very low amounts of proteins reducing the needed quantity of antibodies.



Western blotting detection of HDAC-1 on Hela cell lysate with WESTAR-ONE EXTREME and its competitors.

Sample: Two-fold dilution series of Hela whole cell lysate (abcam®) from 2,5 µg to 0.039 µg of total protein

Primary antibody: Rabbit-anti Human HDAC-1 (abcam®) 1:10000

Secondary antibody: Goat anti-rabbit IgG HRP (2mg/mL) (abcam®) 1:200000

Imaging: ImageQuant™ LAS 4000 (GE Healthcare). Exposure time: 120 seconds