



Reagents for Genomics and Proteomics

Cod. MWM113,0500

PRO-LINER ALL BLUE Protein Marker – Broad range

Application Protocol

Product information

-DESCRIPTION: Protein Marker Broad range (9-180 Kda)

-SIZE: 250 µl × 2,
5 µl per well for 100 applications.

-STORAGE: 4°C for 3 months,
-20°C for 12 months.

-READY-TO-USE: Do NOT heat, dilute, or add reducing agent before loading.

Cyanagen srl
Via Stradelli Guelfi 40/c
40138 Bologna – Italy
+39 051.534063
www.cyanagen.com

Introduction

The **PRO-LINER ALL BLUE** Protein Marker – Broad range is a blue protein standard with 12 pre-stained proteins covering a wide range of molecular weights from 10 to 240 kDa in Tris-Glycine buffer. Proteins are covalently coupled with a blue chromophore, and two reference bands (at 25 kDa and 72 kDa, respectively) are enhanced in intensity when separated on SDS-PAGE (Tris-Glycine buffer).

The **PRO-LINER ALL BLUE** Protein Marker – Broad range is designed for monitoring protein separation during SDS-polyacrylamide gel electrophoresis, verification of Western transfer efficiency on membranes (PVDF, nylon, or nitrocellulose) and for approximating the size of proteins.

Loading volume:

- 3 µl or 5 µl per loading for clear visualization during electrophoresis on a 15-well or 10-well mini-gel.
- 1.5~2.5 µl per well for general Western blotting transfer.
- Apply more for a thicker (> 1.5 mm) or larger gel.

Guide for Molecular Weight Estimation

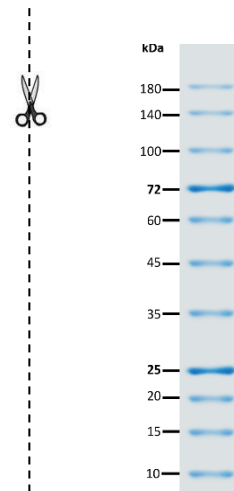
Band	Color	TRIS-GLYCINE	BIS-TRIS (MOPS)	BIS-TRIS (MES)
1	Blue	180	170	170
2	Blue	140	130	130
3	Blue	100	93	93
4	Blue	72	68	70
5	Blue	60	53	53
6	Blue	45	41	42
7	Blue	35	30	30
8	Blue	25	22	23
9	Blue	20	18	18
10	Blue	15	14	14
11	Blue	10	9	9

Migration patterns and approximate MWs (kDa) of **PRO-LINER ALL BLUE** Protein Marker – Broad range in different electrophoresis conditions.

Contents

Approximately 0.1~0.5 mg/ml of each protein in the buffer (20 mM Tris-phosphate (pH 7.5 at 25°C), 2% SDS, 0.2 mM Dithiothreitol, 3.6 M Urea, and 15% (v/v) Glycerol).

PRO-LINER ALL BLUE Protein Marker – Broad range



Note. The apparent molecular weight (kDa) of each protein has been determined by calibration against an unstained protein standard; supplemental data should be considered for more accurate adjustments in different electrophoresis conditions.

Warnings

For research use only.