



Reagents for Genomics and Proteomics

Cod. MWM114,0500

PRO-LINER 3-COLOR Protein Marker – Broad range

Application Protocol

Product information

-DESCRIPTION: Protein Marker Broad range (5-245 Kda)

-SIZE: 250 µl × 2, 5 µl per well for 100 applications.

-STORAGE: 4°C for 3 months, -20°C for 12 months.

-READY-TO-USE: Do NOT heat, dilute, or add reducing agent before loading.

Cyanagen srl
Via Stradelli Guelfi 40/c
40138 Bologna – Italy
+39 051.534063
www.cyanagen.com

Introduction

The **PRO-LINER 3-COLOR** Protein Marker – Broad range is a ready-to-use three-color protein standard with 13 pre-stained proteins covering a wide range of molecular weights from 5 to 245 kDa in Tris-Glycine buffer. Proteins are covalently coupled with a blue chromophore except for two reference bands (a green band at 25 kDa and a red one at 75 kDa) when separated on SDS-PAGE (Tris-Glycine buffer).

The **PRO-LINER 3-COLOR** Protein Marker – Broad range is designed for monitoring protein separation during SDS-polyacrylamide gel electrophoresis, verification of Western transfer efficiency on membranes (PVDF, nylon, or nitrocellulose) and for approximating the size of proteins.

- Loading volume:

- 3 µl or 5 µl per loading for clear visualization during electrophoresis on a 15-well or 10-well mini-gel.
- 1.5~2.5 µl per well for general Western blotting transfer.
- Apply more for a thicker (> 1.5 mm) or larger gel.

Guide for Molecular Weight Estimation

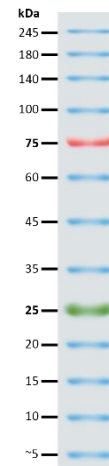
Band	Color	TRIS-GLYCINE	BIS-TRIS (MOPS)	BIS-TRIS (MES)
1	Blue	245	235	235
2	Blue	180	170	170
3	Blue	140	130	130
4	Blue	100	93	93
5	Red	75	70	72
6	Blue	60	53	53
7	Blue	45	41	42
8	Blue	35	30	30
9	Green	25	22	23
10	Blue	20	18	18
11	Blue	15	14	14
12	Blue	10	9	10
13	Blue	~5	~3.5	~3.5

Migration patterns and approximate MWs (kDa) of **PRO-LINER 3-COLOR** Protein Marker – Broad range in different electrophoresis conditions.

Contents

Approximately 0.1~0.4 mg/ml of each protein in the buffer (20 mM Tris-phosphate (pH 7.5 at 25°C), 2 % SDS, 0.2 mM Dithiothreitol, 3.6 M Urea, and 15 % (v/v) Glycerol).

PRO-LINER 3-COLOR Protein Marker – Broad range



Note. The apparent molecular weight (kDa) of each protein has been determined by calibration against an unstained protein standard; supplemental data should be considered for more accurate adjustments in different electrophoresis conditions.

Warnings

For research use only.