

PRODUCT DATASHEET

Beta-Tubulin Polyclonal Antibody

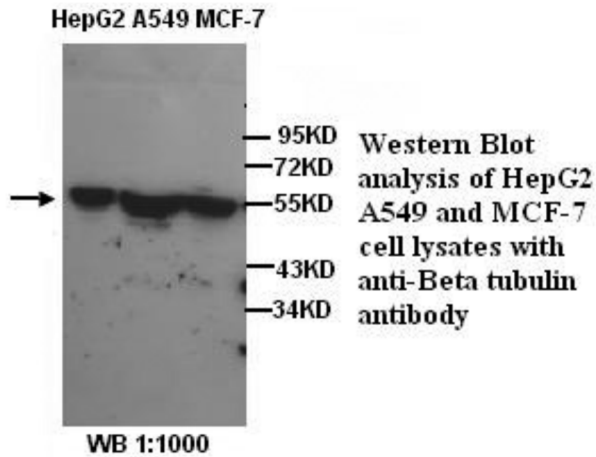
Product Information

Product Number:	ABP134
Package size :	100 µL
Description:	Rabbit polyclonal to beta-Tubulin
Host Species:	Rabbit
Purification:	Affinity purified
Application:	WB, ELISA
Species Reactivity:	Hu Ms Rt
Specificity:	Not yet tested in other species
Immunogen Type:	Peptide-KLH
Immunogen Description:	Synthetic peptide conjugated to KLH
Target Name:	β-Tubulin
Concentration:	1.0mg/ml
Buffer:	PBS, pH 7.4 with 0.02% Sodium Azide
Storage:	Store at -20°C for long-term preservation (recommended). Store at 4°C for short-term use. Avoid freeze / thaw cycle.

Application details

Predicted MW:	55 KDa
WB dilution:	~ 1:1000

Images



Western blot analysis of HepG2, A549 and MCF-7 cell lysates using beta-Tubulin Polyclonal Antibody ABP134.

Background

Beta-Tubulin is a subunit of tubulin. Tubulin is one of several members of a small family of globular proteins. It is the major constituent of microtubules. There are two of most common members of the tubulin family: alpha-tubulin and beta-tubulin, and together their dimers form microtubules.

Disclaimer

The product was manufactured via a Quality System certified ISO9001 and tested in accordance with documented quality procedures and approved as a result of meeting the required specification. This product is for in vitro research use only and is not intended for use in humans or animals. Cyanagen warrants that its products conform to the information contained in this and other Cyanagen publications. Purchaser must determine the suitability of the product for its particular use.