

## PRODUCT DATASHEET

---

### PCNA Polyclonal Antibody

#### Product Information

---

<b>Product Number:</b>	ABP141
<b>Package size :</b>	100 µL
<b>Description:</b>	Rabbit polyclonal to PCNA
<b>Host Species:</b>	Rabbit
<b>Purification:</b>	Antibodies were purified by affinity purification using immunogen
<b>Application:</b>	WB IHC IF IP
<b>Species Reactivity:</b>	Hu Ms Rt
<b>Specificity:</b>	The antibody detects endogenous level of total PCNA protein
<b>Immunogen Type:</b>	Recombinant Protein
<b>Immunogen Description:</b>	Recombinant protein of human PCNA
<b>Target Name:</b>	PCNA
<b>Other Names:</b>	PCNA; MGC8367;
<b>Accession No:</b>	Swiss-Prot:P12004NCBI Gene ID:5111
<b>Concentration:</b>	1.0mg/ml
<b>Buffer:</b>	phosphate buffered saline (without Mg <sup>2+</sup> and Ca <sup>2+</sup> ), pH 7.4, 150mM NaCl, 0.02% sodium azide and 50% glycerol.
<b>Storage:</b>	Store at -20°C for long-term preservation (recommended). Store at 4°C for short-term use. Avoid freeze / thaw cycle.

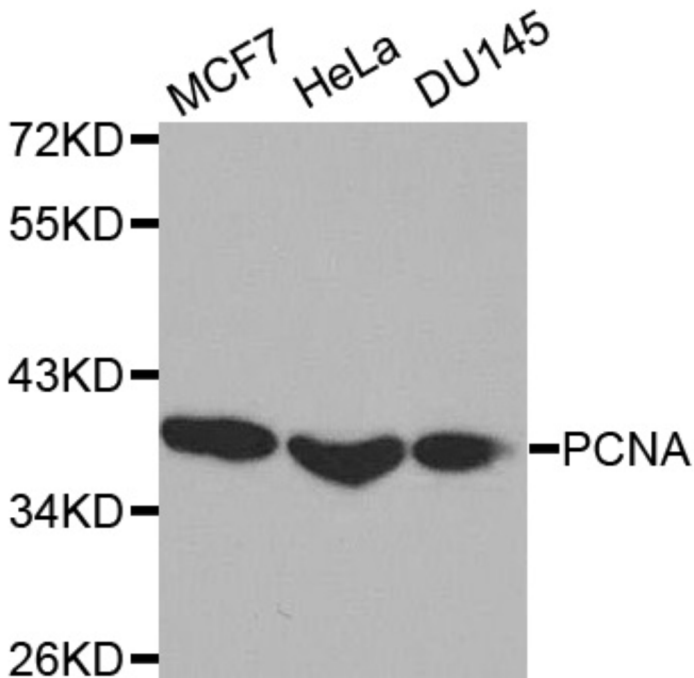
#### Application details

---

<b>Predicted MW:</b>	29 KDa
<b>WB dilution:</b>	1:500-1:2000
<b>Immunohistochemistry:</b>	1:50-1:200
<b>Immunofluorescence:</b>	1:20-1:50
<b>Immunoprecipitation:</b>	1:20-1:50

## Images

---



Western blot analysis of extracts of various cell lines, using PCNA Polyclonal Antibody ABP141.

## Background

---

Proliferating cell nuclear antigen, PCNA, is a cofactor of DNA polymerase delta, and is expressed in the nuclei of cells during the DNA synthesis phase (S phase) of the cell cycle.

## Disclaimer

---

The product was manufactured via a Quality System certified ISO9001 and tested in accordance with documented quality procedures and approved as a result of meeting the required specification. This product is for in vitro research use only and is not intended for use in humans or animals. Cyanagen warrants that its products conform to the information contained in this and other Cyanagen publications. Purchaser must determine the suitability of the product for its particular use.