

PRODUCT DATASHEET

Vinculin Polyclonal Antibody

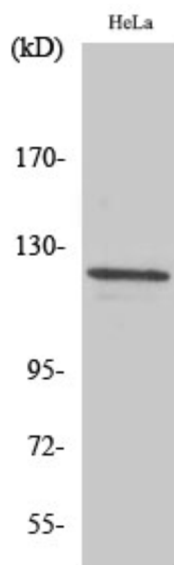
Product Information

Product Number:	ABP137
Package size :	100 µL
Description:	Rabbit polyclonal to Vinculin
Host Species:	Rabbit
Purification:	The antibody was affinity-purified from rabbit antiserum by affinity-chromatography using epitope-specific immunogen
Application:	WB IHC IF ELISA
Species Reactivity:	Hu Ms Rt
Specificity:	Vinculin Polyclonal Antibody detects endogenous levels of Vinculin protein
Immunogen Type:	Peptide
Immunogen Description:	Synthesized peptide derived from human Vinculin around the non-phosphorylation site of Y821
Target Name:	Vinculin
Other Names:	VCL; Vinculin; Metavinculin
Accession No:	Swiss-Prot: P18206NCBI Gene ID: 7414
Concentration:	1.0mg/ml
Buffer:	PBS containing 50% glycerol, 0.5% BSA and 0.02% sodium azide
Storage:	Store at -20°C for long-term preservation (recommended). Store at 4°C for short-term use. Avoid freeze / thaw cycle.

Application details

Predicted MW:	123 KDa
WB dilution:	1:500-1:2000
Immunohistochemistry	1:100-1:300
Immunofluorescence	1:200-1:1000
ELISA	1:10000

Images



Western Blot analysis of HeLa cells using Vinculin Polyclonal Antibody ABP137.

Background

Vinculin is a cytoskeletal protein and represents one major component for cell-cell and cell-matrix junctions. Vinculin polyclonal antibody can be used as a loading control for high molecular weight proteins.

Disclaimer

The product was manufactured via a Quality System certified ISO9001 and tested in accordance with documented quality procedures and approved as a result of meeting the required specification. This product is for in vitro research use only and is not intended for use in humans or animals. Cyanagen warrants that its products conform to the information contained in this and other Cyanagen publications. Purchaser must determine the suitability of the product for its particular use.