



NEW

THE RIGHT LIGHT

RUBY GEL STAIN

Fluorescent stain for
protein detection in gels

03



www.cyanagen.com

RUBY GEL STAIN

TECHNICAL DESCRIPTION

Ruby Gel Stain is a ready to use kit for rapid and sensitive protein staining in 1D and 2D SDS polyacrylamide electrophoresis gels.

It enables optimal visualization and quantitation of proteins with high contrast and the same sensitivity as silver staining without its drawbacks. The staining procedure is a simple 220 minutes, three step protocol.

After staining, proteins can be removed from the gel and analyzed by mass spectrometry without interference from the stain.

The dye has optimal excitation at 302 and 470 nm, with an emission maximum at approximately 610 nm.

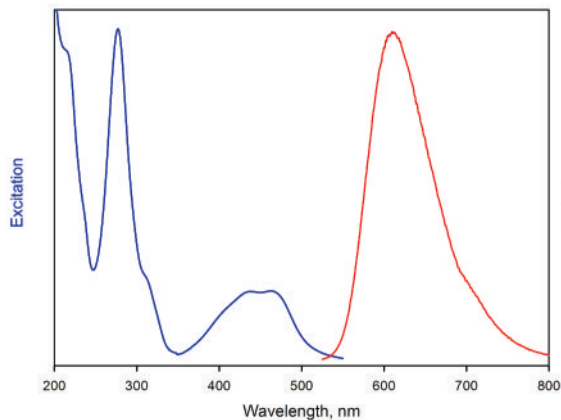
Ruby Gel Stain can be excited with UV-light, UV transilluminator and 405, 445, 473-488 nm laser sources.

FEATURES

Ready to use kit

- High purity dye: >98%
- Optimal signal to background ratio
- Strong, uniform and reproducible signal from 0.2 ng to 10 ng protein
- Fast staining protocol (220 min)
- Convenient: fixing and destaining solutions included in the kit

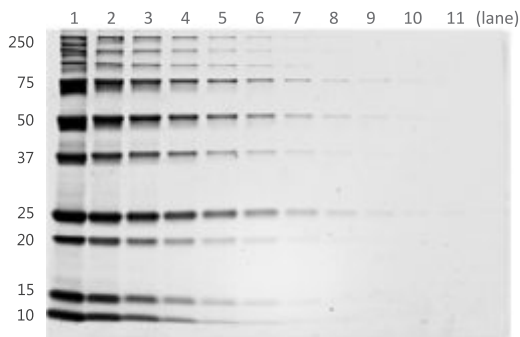
The gel can be visualized using excitation wavelength in the 400-500 nm range with bright emission peak centred around 610 nm.



product	cat #	size	Cat #
RUBY GEL STAIN	PRTD066,0050	50 mL A + 100 mL B	
	PRTD066,0250	250 mL A + 500 mL B	
	PRTD066,0500	500 mL A + 1000 mL B	

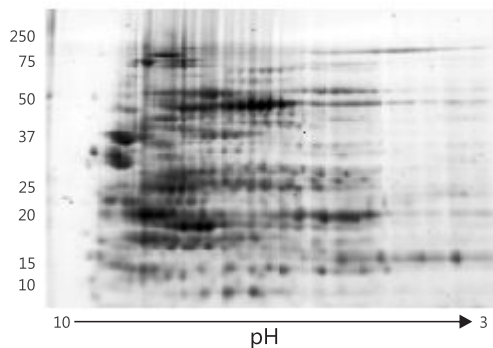
IMAGES AND COMPARISON WITH THE MOST USED GEL STAINING REAGENTS

1D GEL



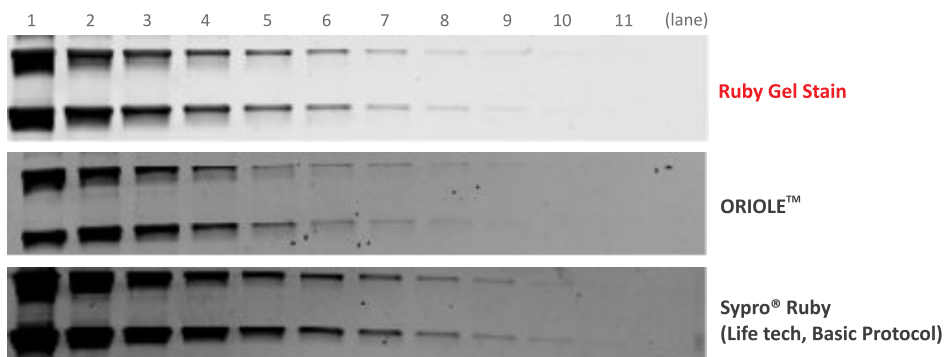
Two-fold dilution series of the Precision Plus Protein™ Unstained Bio-Rad marker separated on a Bio-Rad Mini-PROTEAN® TGX™ 12% and stained following Ruby Gel Stain 220 min protocol. Images acquired by GEHC "ImageQuant™ LAS 4000", Exc 312 nm, exposure time 1s. Lane 9 is approximately 0.4 ng

2D GEL



60 µg of Bio-Rad E.coli lysate sample ready prep, separated on Bio-Rad non linear 3-10 pI IPG strip and then on a SDS-PAGE (T%8-16) with a Bio-Rad PROTEAN® II XI system. The gel was stained following Ruby Gel Stain 220 min protocol. The image was digitalized by Bio-Rad Molecular Imager FX™ Pro fluorescent imager, PMT Voltage Medium Sample Intensity.

1D GEL – COMPARISON



Ruby Gel Stain on a 1D gel. Two-fold dilution series of Precision Plus Protein™ Unstained Bio-Rad marker, separated on a Bio-Rad Mini PROTEAN® TGX™ 12%. Lane 9 is approximately 0.4 ng.

Images acquired by GEHC ImageQUANT™ LAS 4000, Ex 312 nm, exposure time 1s.

CYANAGEN

Reagents for Molecular Biology

Cyanagen s.r.l.
Via Stradelli Guelfi, 40/C
40138 Bologna (ITALY)

T +39 051 534063
info@cyanagen.com
www.cyanagen.com

RUBY GEL STAIN

Cyanagen srl has a certified Quality System

ISO 9001:2008 QUALITY CERTIFIED

ISO 9001
BUREAU VERITAS
Certification



03

www.cyanagen.com